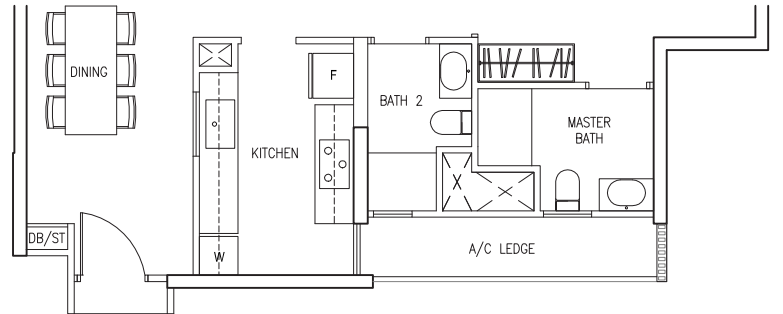


3 BEDROOM



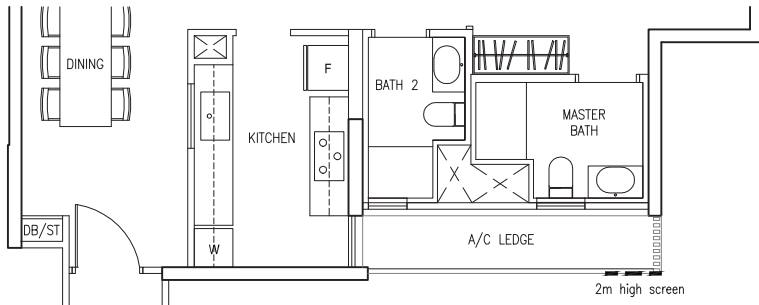
TYPE C1

83 sq m/ 893 sq ft
#02-05 to #16-05, #11-05

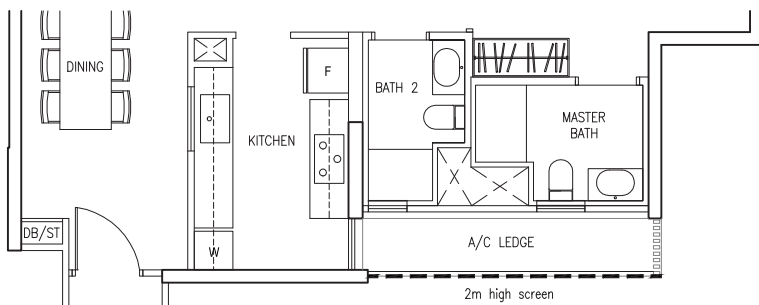


TYPE C1a

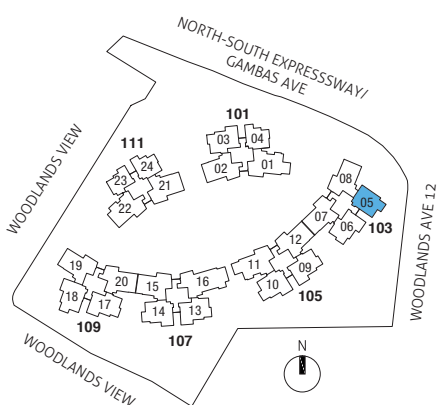
83 sq m/ 893 sq ft
#01-05



#12-05 to #15-05*



#16-05*



* DSTA screening / frosted glass may be provided for these units



Area includes A/C ledge, balcony and PES where applicable. Orientations and facings will differ depending on the unit you are purchasing. Please refer to the key plan. The plans are subjected to change as may be required or approved by relevant authorities. All areas are approximate and subject to final survey. The developer and its agents cannot be held liable for any inaccuracies.

3 BEDROOM

TYPE C2 / C2(M)

92 sq m/ 990 sq ft

C2

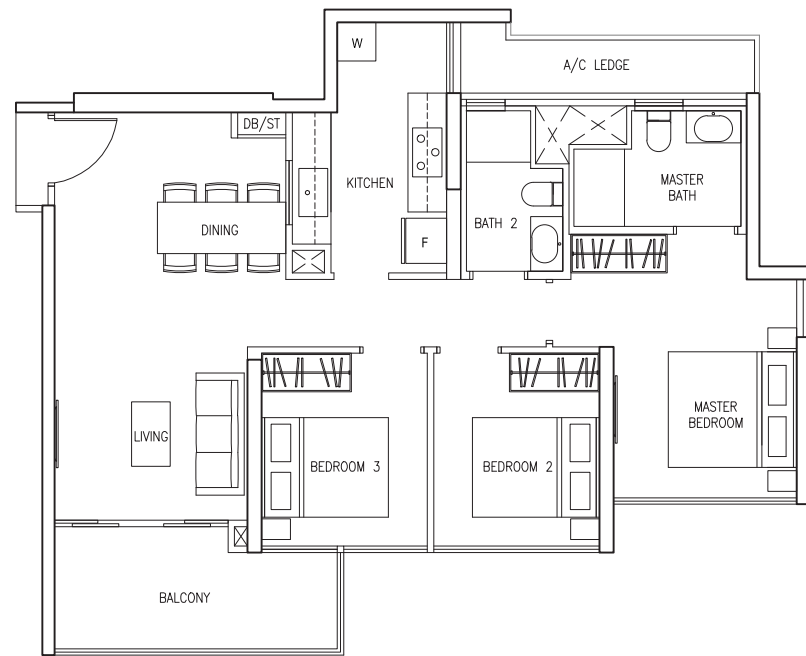
#02-09 to #11-09

#02-13 to #13-13

#02-17 to #13-17

C2(M) - Mirror Units

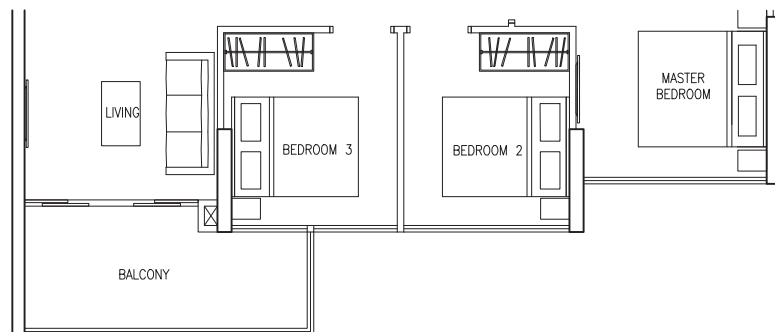
#02-06 to #11-06



TYPE C2a

92 sq m/ 990 sq ft

#02-03 to #16-03



TYPE C2-P / C2(M)-P

92 sq m/ 990 sq ft

C2-P

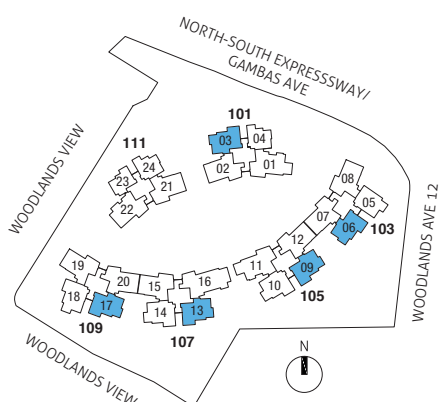
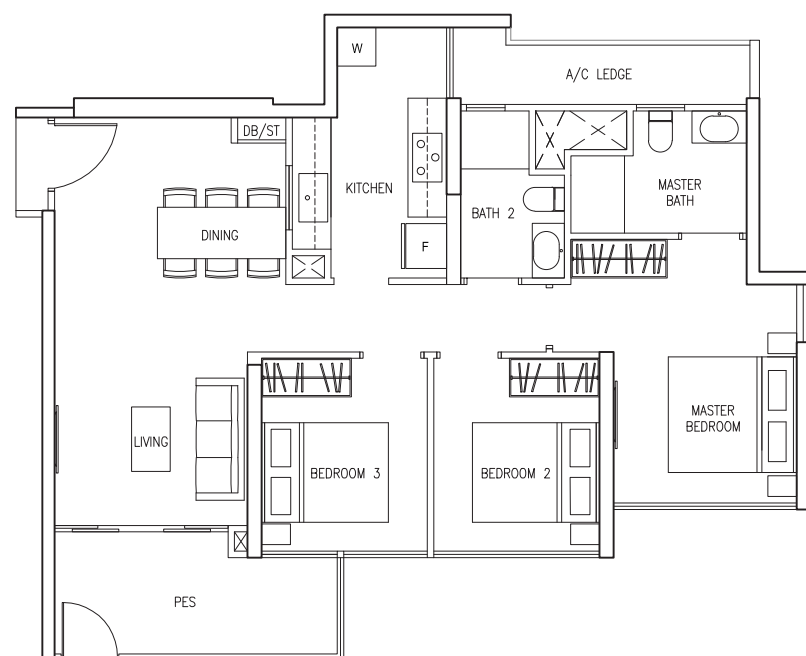
#01-09

#01-13

#01-17

C2(M) P - Mirror Unit

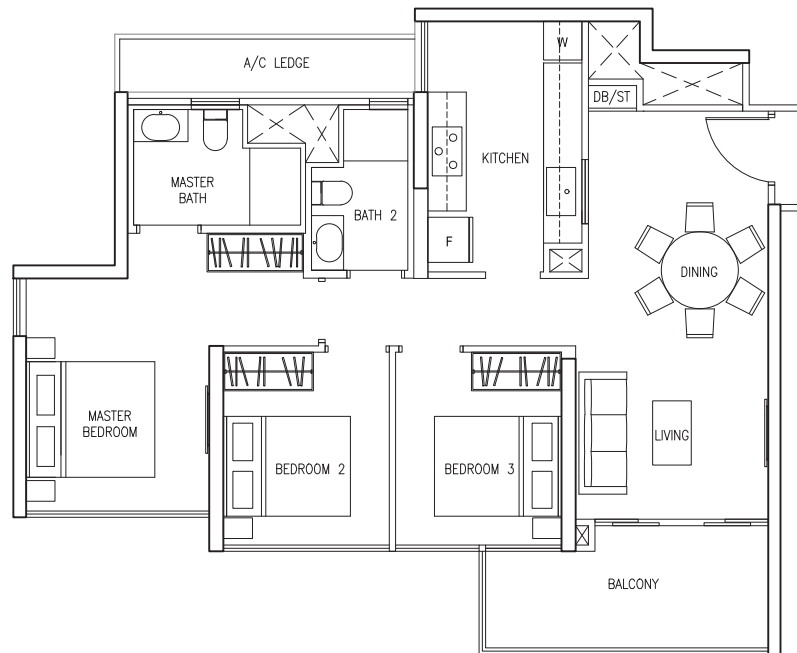
#01-06



Area includes A/C ledge, balcony and PES where applicable. Orientations and facings will differ depending on the unit you are purchasing. Please refer to the key plan. The plans are subjected to change as may be required or approved by relevant authorities. All areas are approximate and subject to final survey. The developer and its agents cannot be held liable for any inaccuracies.

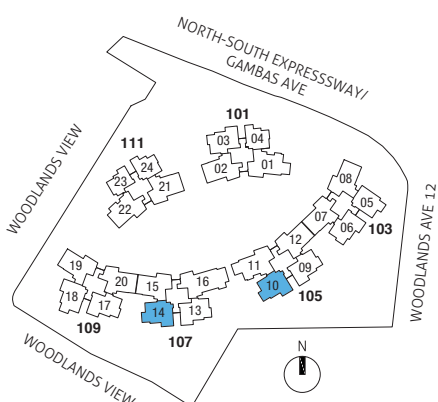
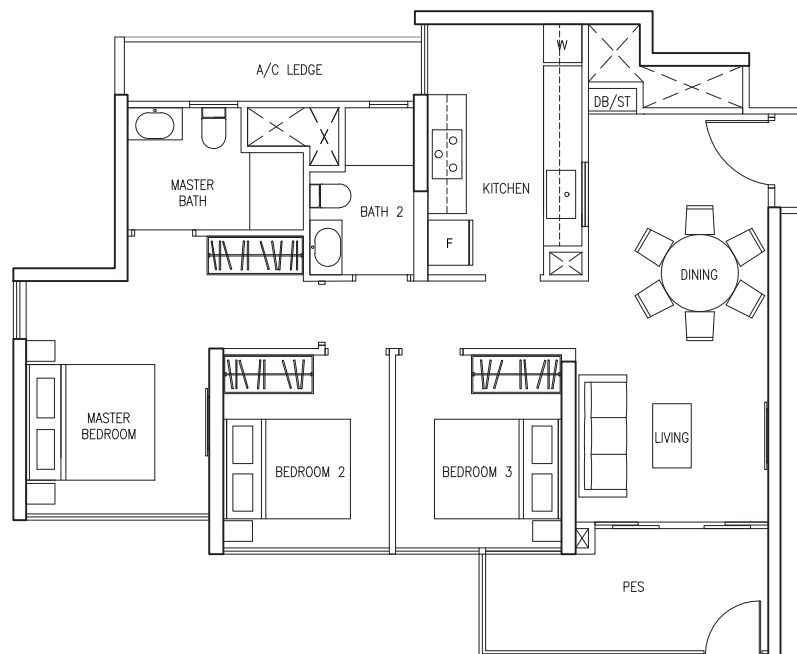
TYPE C3

91 sq m/ 979 sq ft
 #02-10 to #13-10
 #02-14 to #13-14



TYPE C3-P

91 sq m/ 979 sq ft
 #01-10
 #01-14

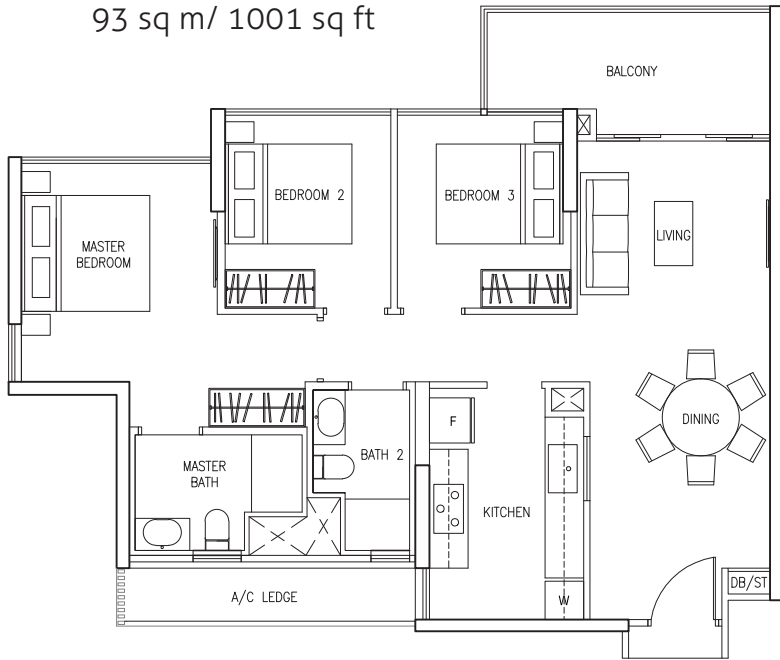


Area includes A/C ledge, balcony and PES where applicable. Orientations and facings will differ depending on the unit you are purchasing. Please refer to the key plan. The plans are subjected to change as may be required or approved by relevant authorities. All areas are approximate and subject to final survey. The developer and its agents cannot be held liable for any inaccuracies.

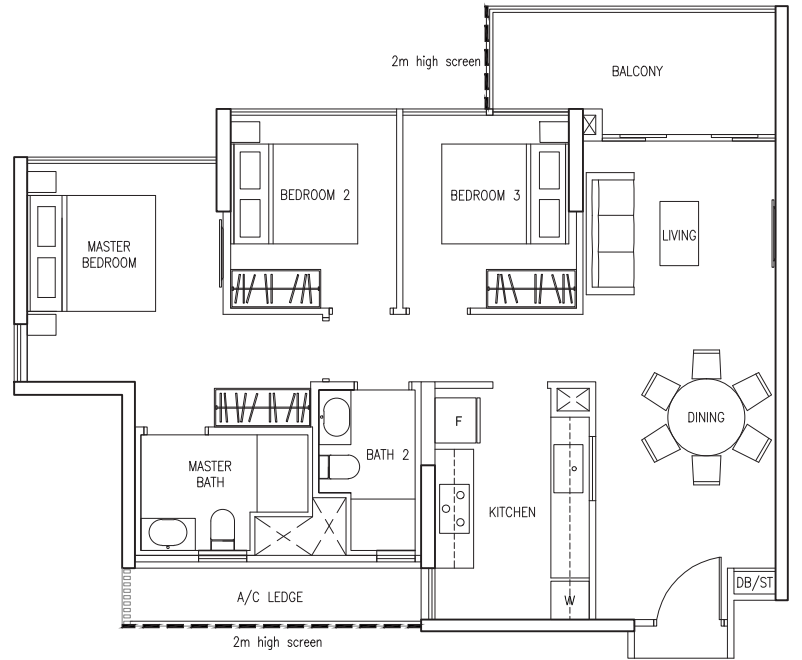
3 BEDROOM

TYPE C4

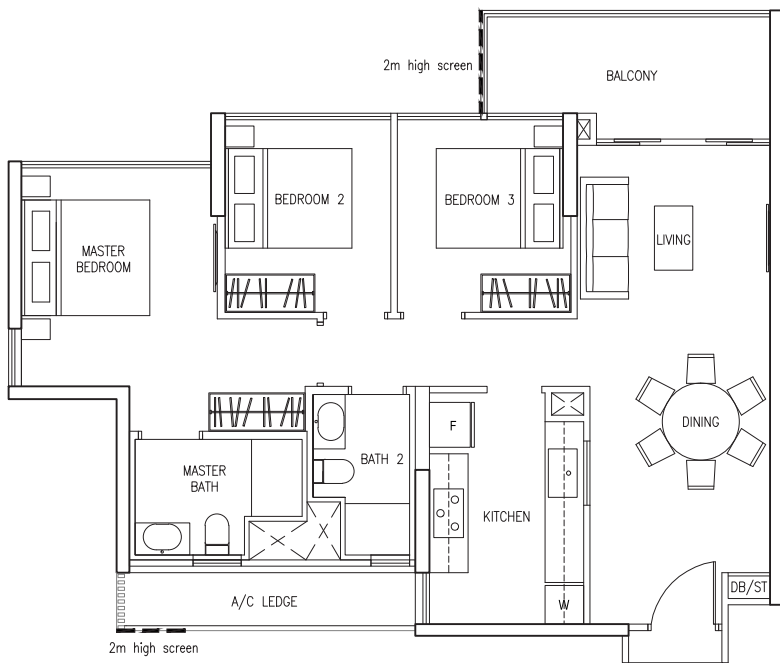
93 sq m/ 1001 sq ft



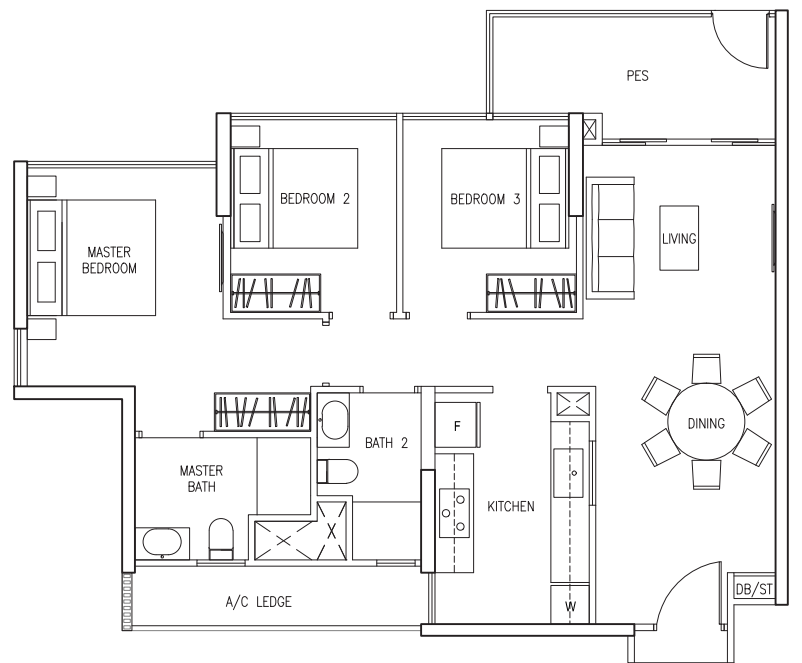
#02-18 to #13-18



#16-18*



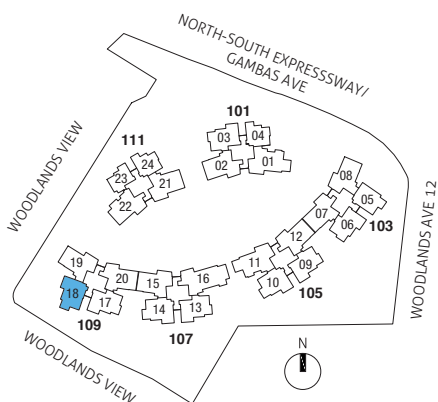
#14-18 to #15-18*



TYPE C4-P

93 sq m/ 1001 sq ft

#01-18



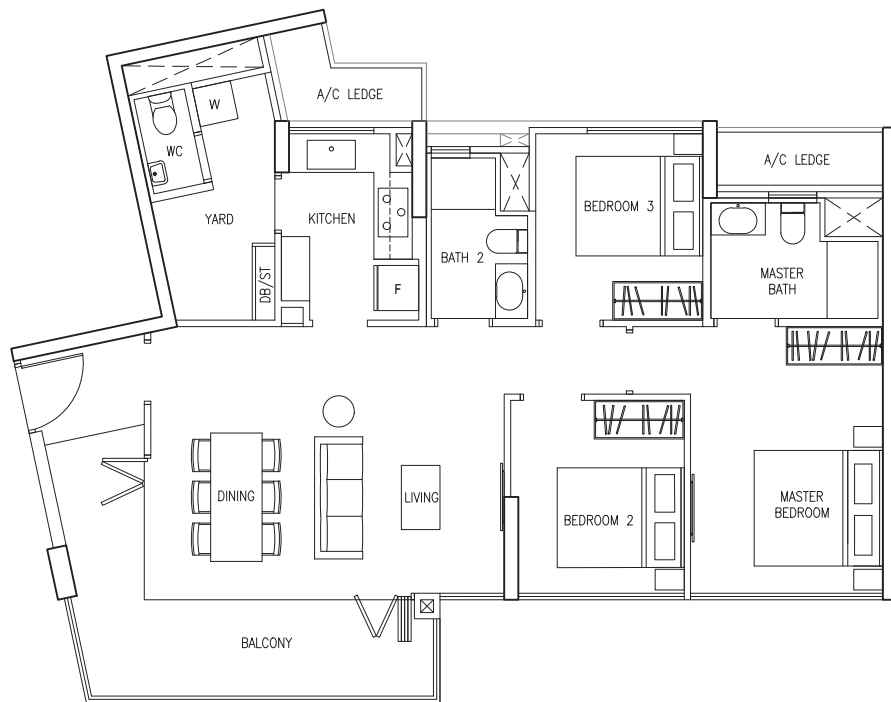
* DSTA screening/ frosted glass may be provided for these units



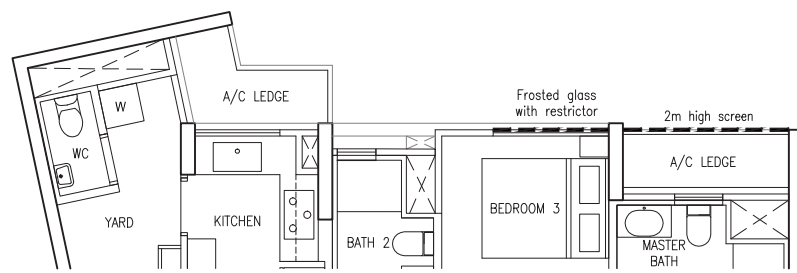
Area includes A/C ledge, balcony and PES where applicable. Orientations and facings will differ depending on the unit you are purchasing. Please refer to the key plan. The plans are subjected to change as may be required or approved by relevant authorities. All areas are approximate and subject to final survey. The developer and its agents cannot be held liable for any inaccuracies.

TYPE C5

102 sq m/ 1097 sq ft
#02-15 to #13-15
#03-21 to #16-21

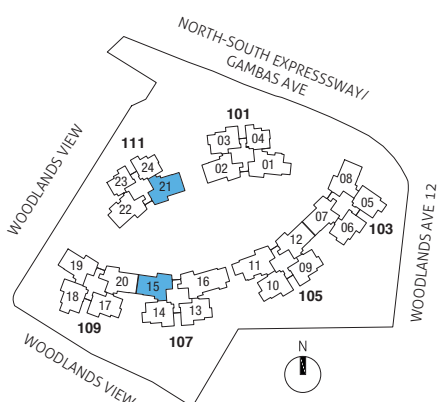
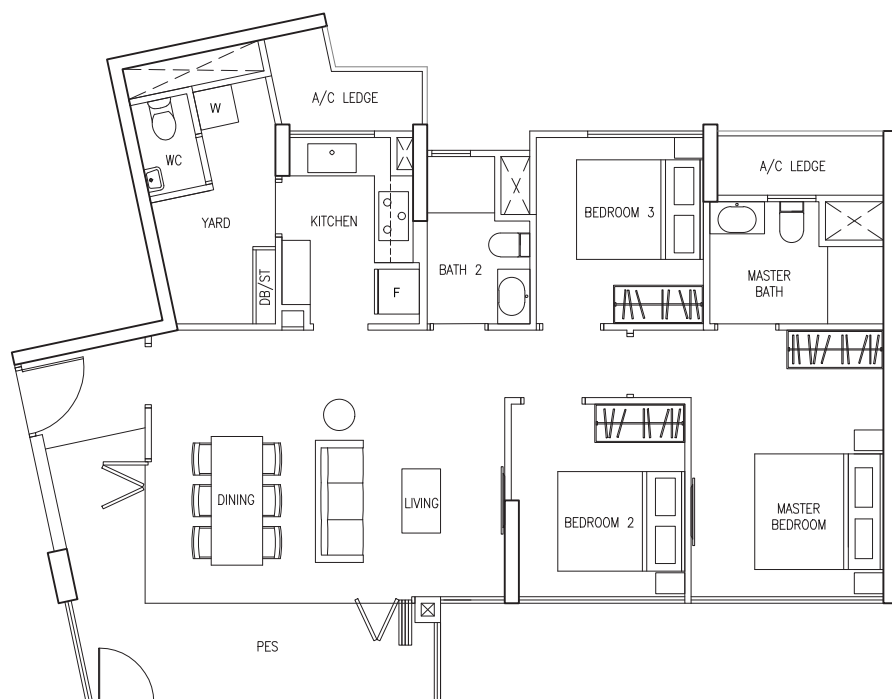


#14-15 to #15-15*



TYPE C5-P

102 sq m/ 1097 sq ft
#01-15
#01-21



* DSTA screening/ frosted glass may be provided for these units



Area includes A/C ledge, balcony and PES where applicable. Orientations and facings will differ depending on the unit you are purchasing. Please refer to the key plan. The plans are subjected to change as may be required or approved by relevant authorities. All areas are approximate and subject to final survey. The developer and its agents cannot be held liable for any inaccuracies.

3 BEDROOM PATIO HOME

TYPE C5a / C5a(M)

103 sq m/ 1108 sq ft

C5a

#02-08 to #11-08

C5a(M) - Mirror Units

#02-19 to #13-19

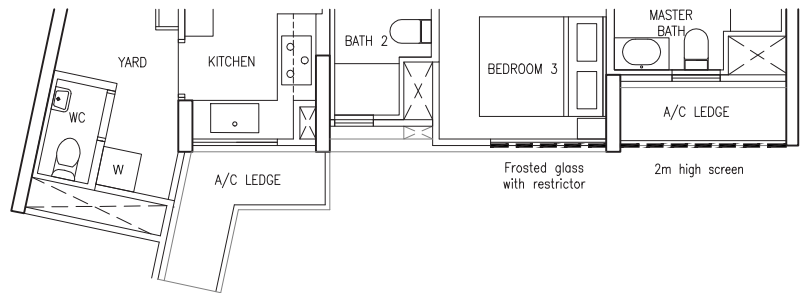


C5a

#12-08 to #16-08*

C5a(M) - Mirror Units

#14-19 to #16-19*



TYPE C5a-P / C5a(M)-P

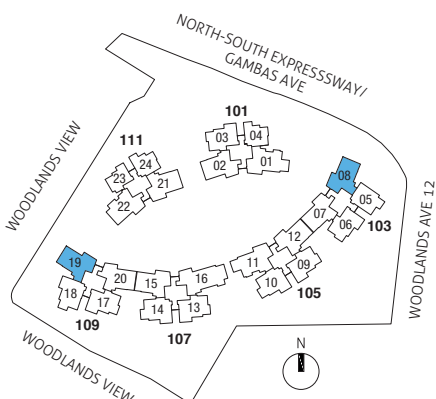
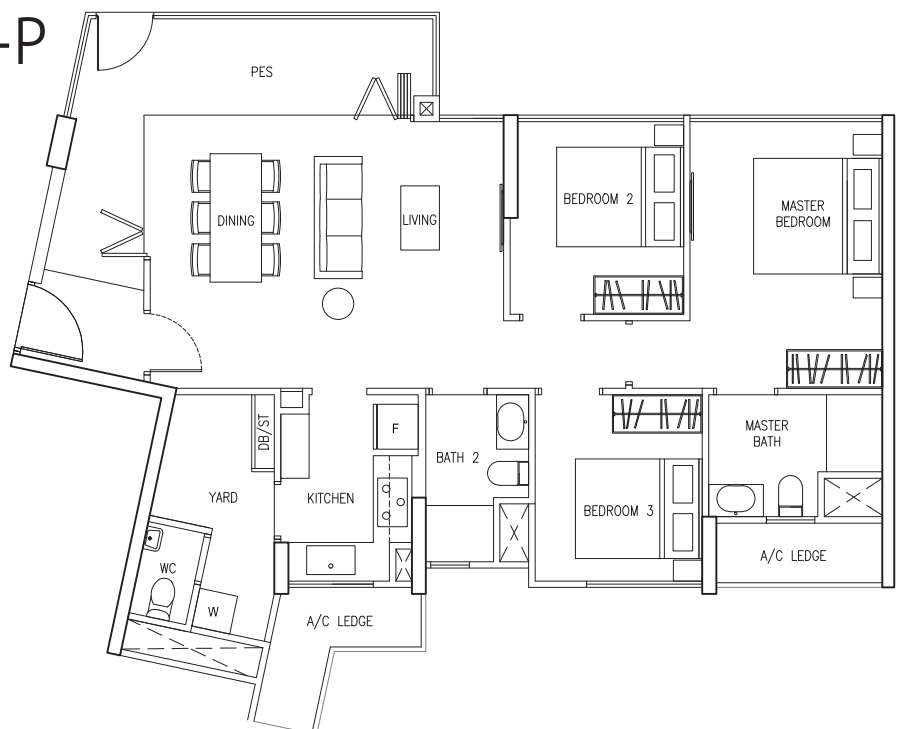
103 sq m/ 1108 sq ft

C5a-P

#01-08

C5a(M)-P - Mirror Unit

#01-19



* DSTA screening / frosted glass may be provided for these units



Area includes A/C ledge, balcony and PES where applicable. Orientations and facings will differ depending on the unit you are purchasing. Please refer to the key plan. The plans are subjected to change as may be required or approved by relevant authorities. All areas are approximate and subject to final survey. The developer and its agents cannot be held liable for any inaccuracies.

3 BEDROOM PATIO HOME

TYPE C6 / C6(M)

104 sq m/ 1119 sq ft

C6

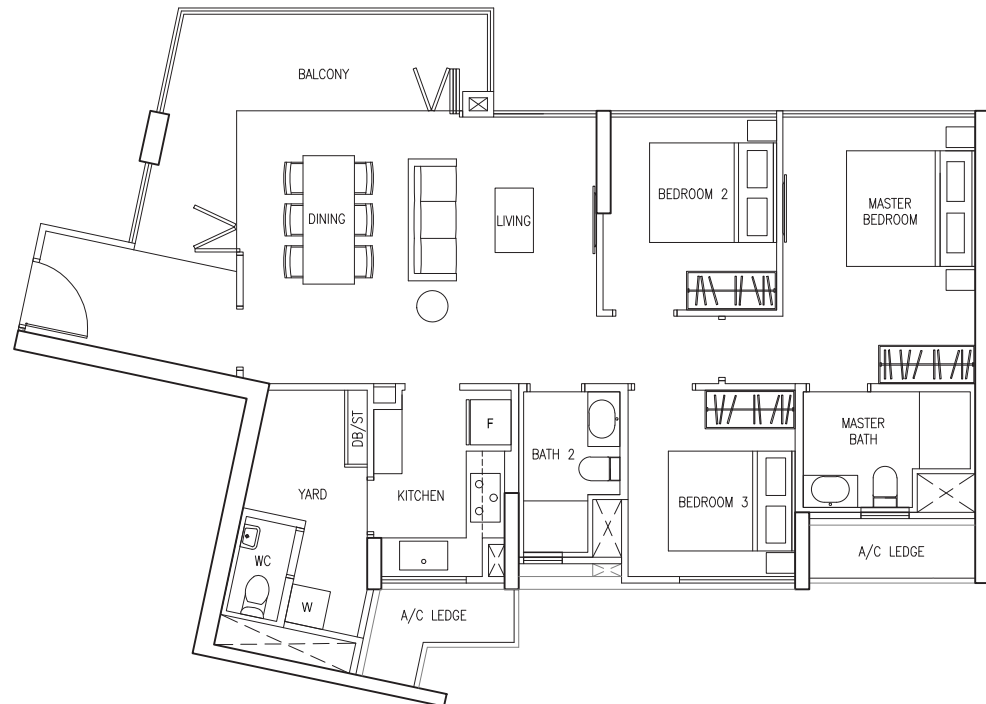
#03-02 to #16-02

#02-12 to #11-12

#02-20 to #13-20

C6(M) - Mirror Units

#02-07 to #11-07



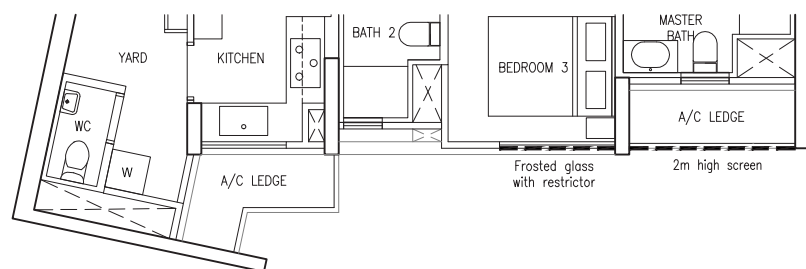
C6

#12-12 to #15-12*

#14-20 to #15-20*

C6(M) - Mirror Units

#12-07 to #15-07*



TYPE C6-P / C6(M)-P

104 sq m/ 1119 sq ft

C6-P

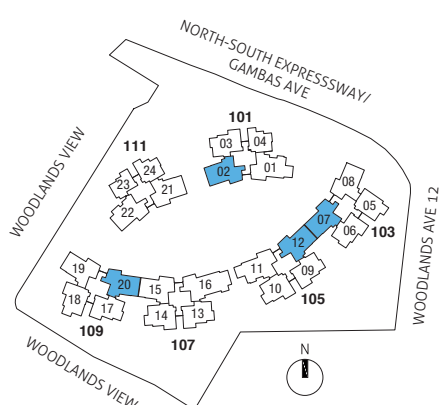
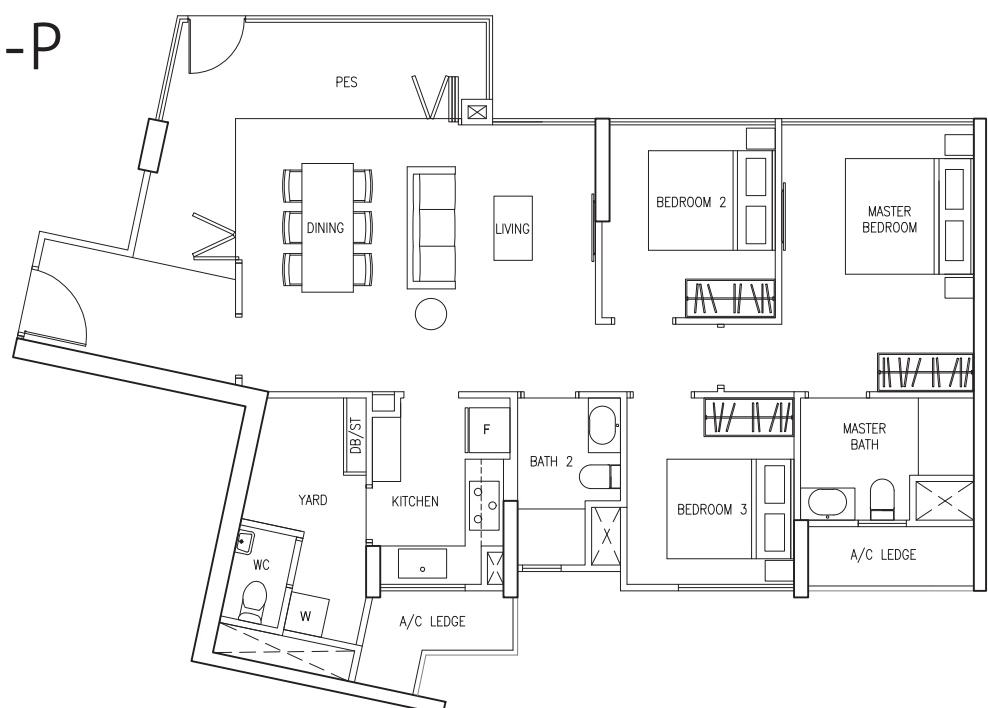
#01-02

#01-12

#01-20

C6(M)-P - Mirror Unit

#01-07



* DSTA screening / frosted glass may be provided for these units



Area includes A/C ledge, balcony and PES where applicable. Orientations and facings will differ depending on the unit you are purchasing. Please refer to the key plan. The plans are subjected to change as may be required or approved by relevant authorities. All areas are approximate and subject to final survey. The developer and its agents cannot be held liable for any inaccuracies.

3 BEDROOM PATIO HOME

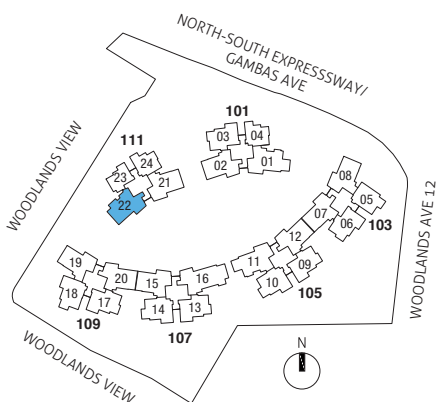
TYPE C6a

105 sq m/ 1130 sq ft
#02-22 to #16-22



TYPE C6a-P

105 sq m/ 1130 sq ft
#01-22



Area includes A/C ledge, balcony and PES where applicable. Orientations and facings will differ depending on the unit you are purchasing. Please refer to the key plan. The plans are subjected to change as may be required or approved by relevant authorities. All areas are approximate and subject to final survey. The developer and its agents cannot be held liable for any inaccuracies.