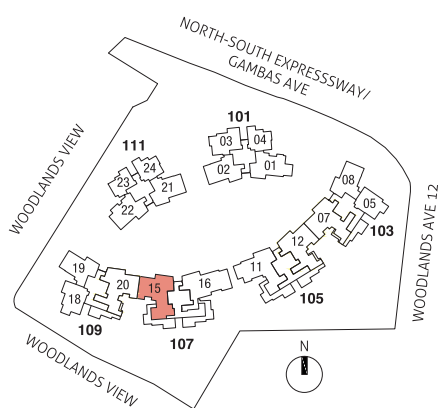
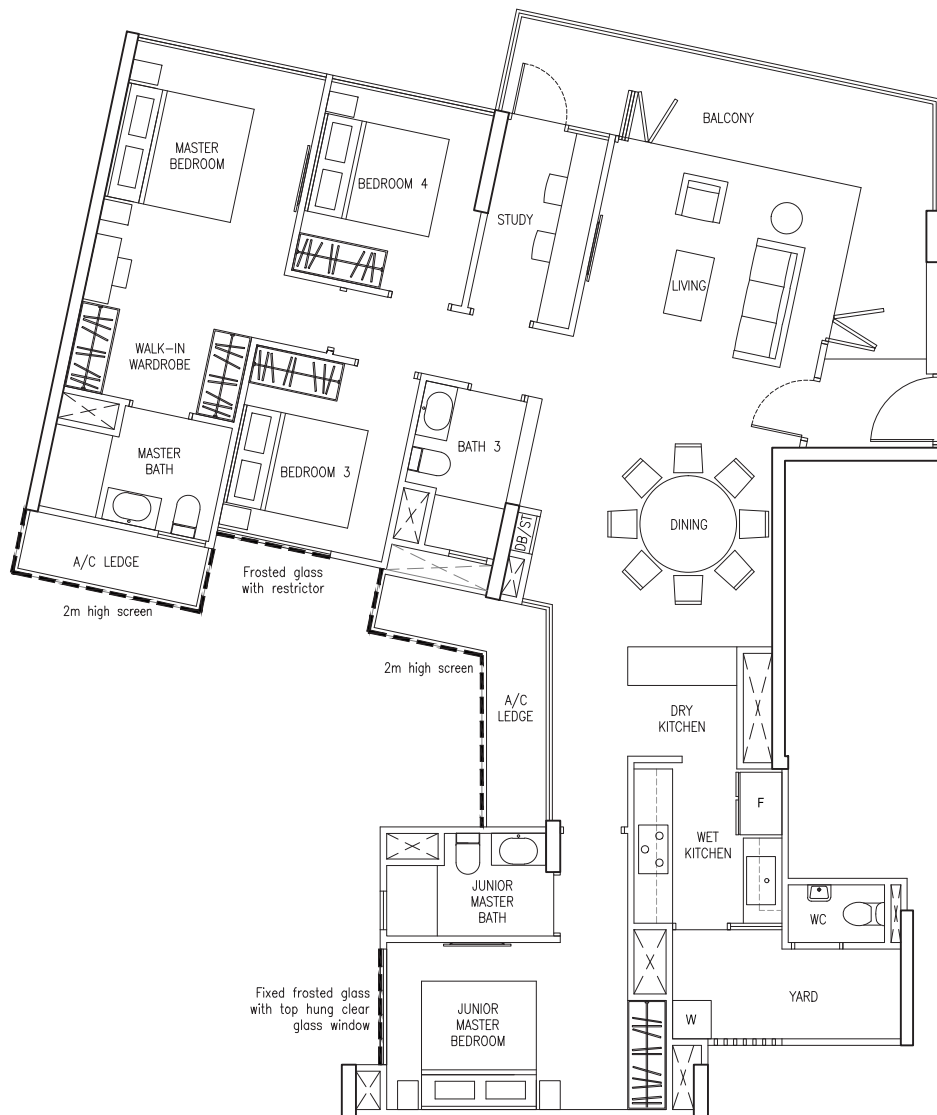


TYPE PH1

148 sq m/ 1593 sq ft
 #16-15*



* DSTA screening / frosted glass may be provided for these units



Area includes A/C ledge, balcony and PES where applicable. Orientations and facings will differ depending on the unit you are purchasing. Please refer to the key plan. The plans are subjected to change as may be required or approved by relevant authorities. All areas are approximate and subject to final survey. The developer and its agents cannot be held liable for any inaccuracies.

PENTHOUSE

4+1 BEDROOM

PATIO HOME

TYPE PH2

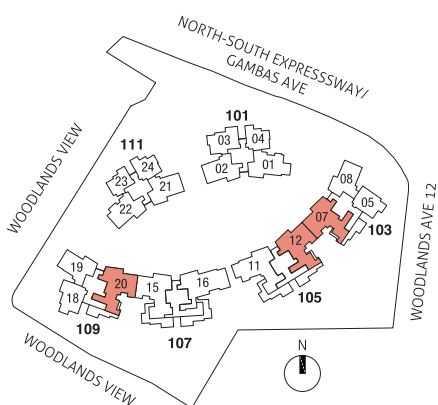
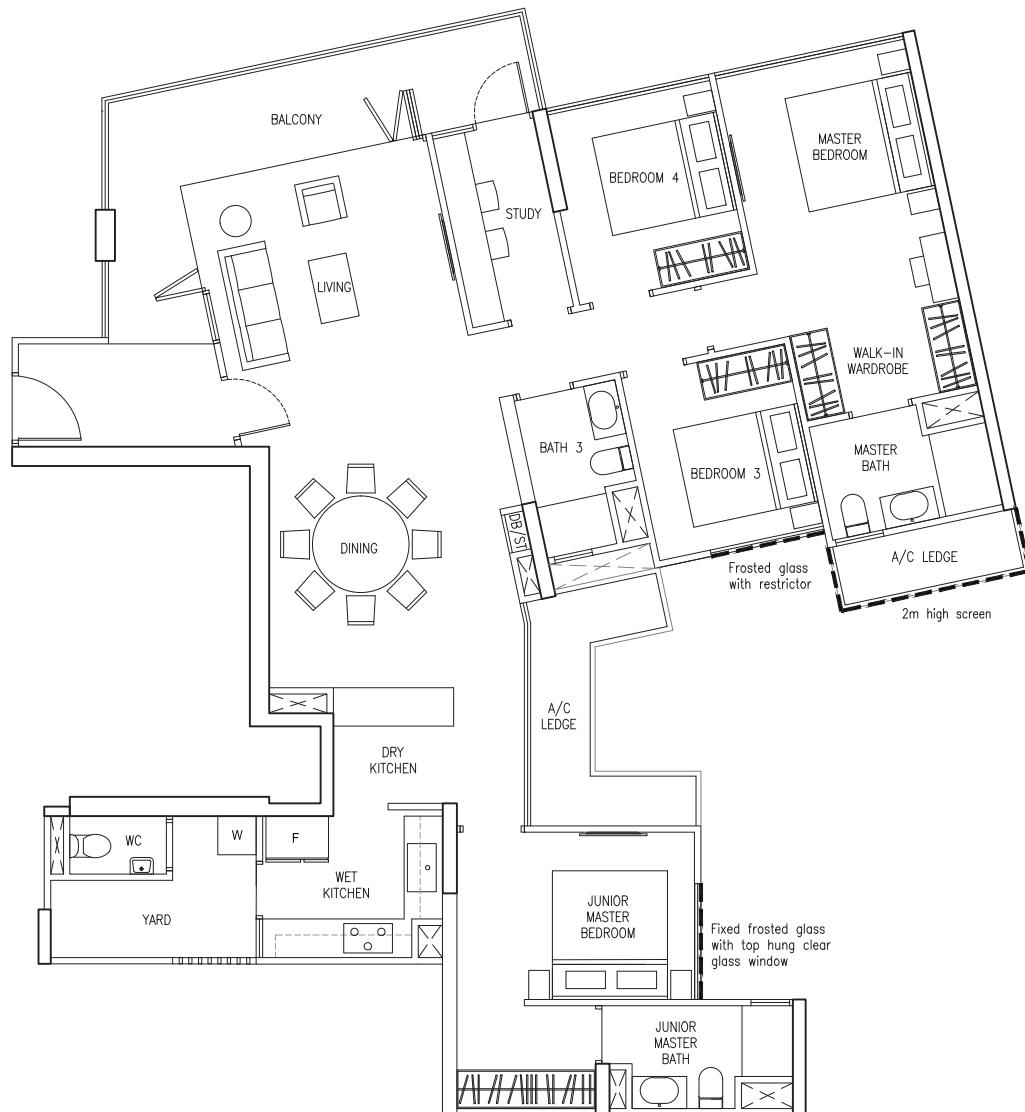
157 sq m/ 1689 sq ft

#16-12*

#16-20*

PH2(M) - Mirror Unit

#16-07



* DSTA screening / frosted glass may be provided for these units



Area includes A/C ledge, balcony and PES where applicable. Orientations and facings will differ depending on the unit you are purchasing. Please refer to the key plan. The plans are subjected to change as may be required or approved by relevant authorities. All areas are approximate and subject to final survey. The developer and its agents cannot be held liable for any inaccuracies.

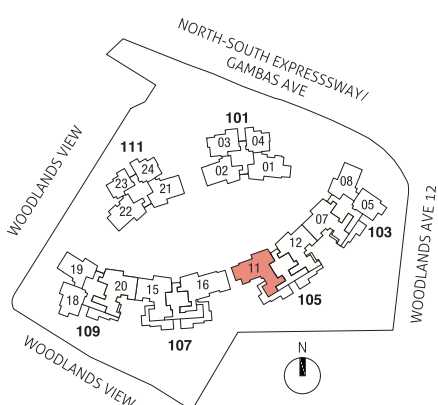
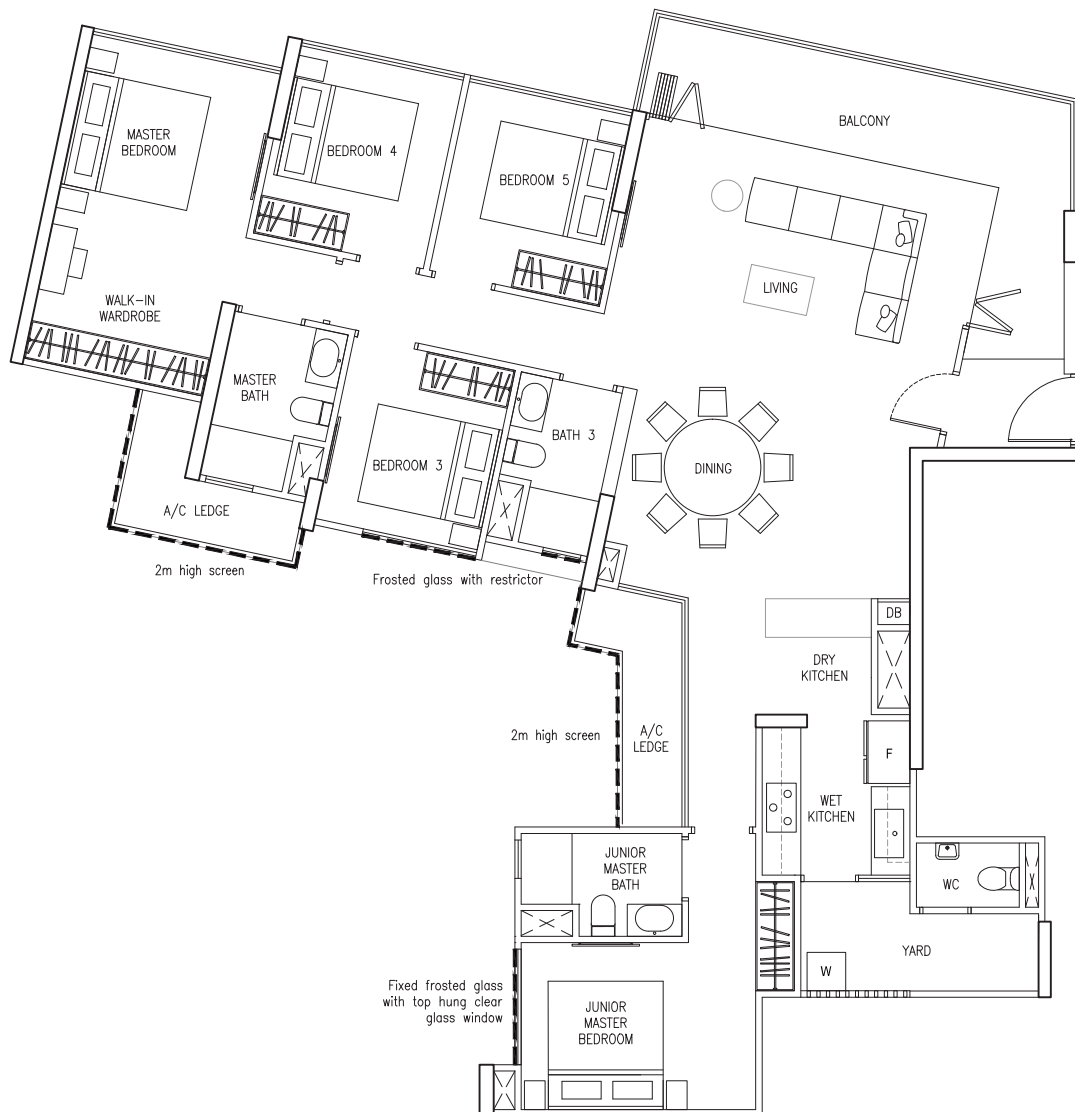
PENTHOUSE

5 BEDROOM

PATIO HOME

TYPE PH3

160 sq m/ 1722 sq ft
#16-11*



* DSTA screening/ frosted glass may be provided for these units



Area includes A/C ledge, balcony and PES where applicable. Orientations and facings will differ depending on the unit you are purchasing. Please refer to the key plan. The plans are subjected to change as may be required or approved by relevant authorities. All areas are approximate and subject to final survey. The developer and its agents cannot be held liable for any inaccuracies.

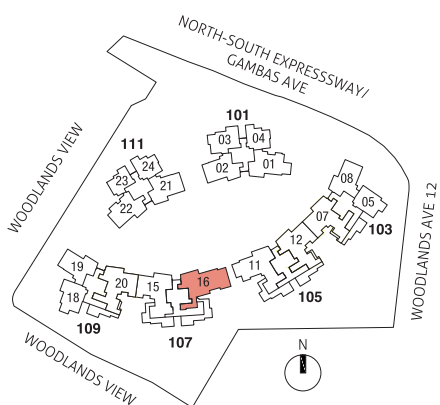
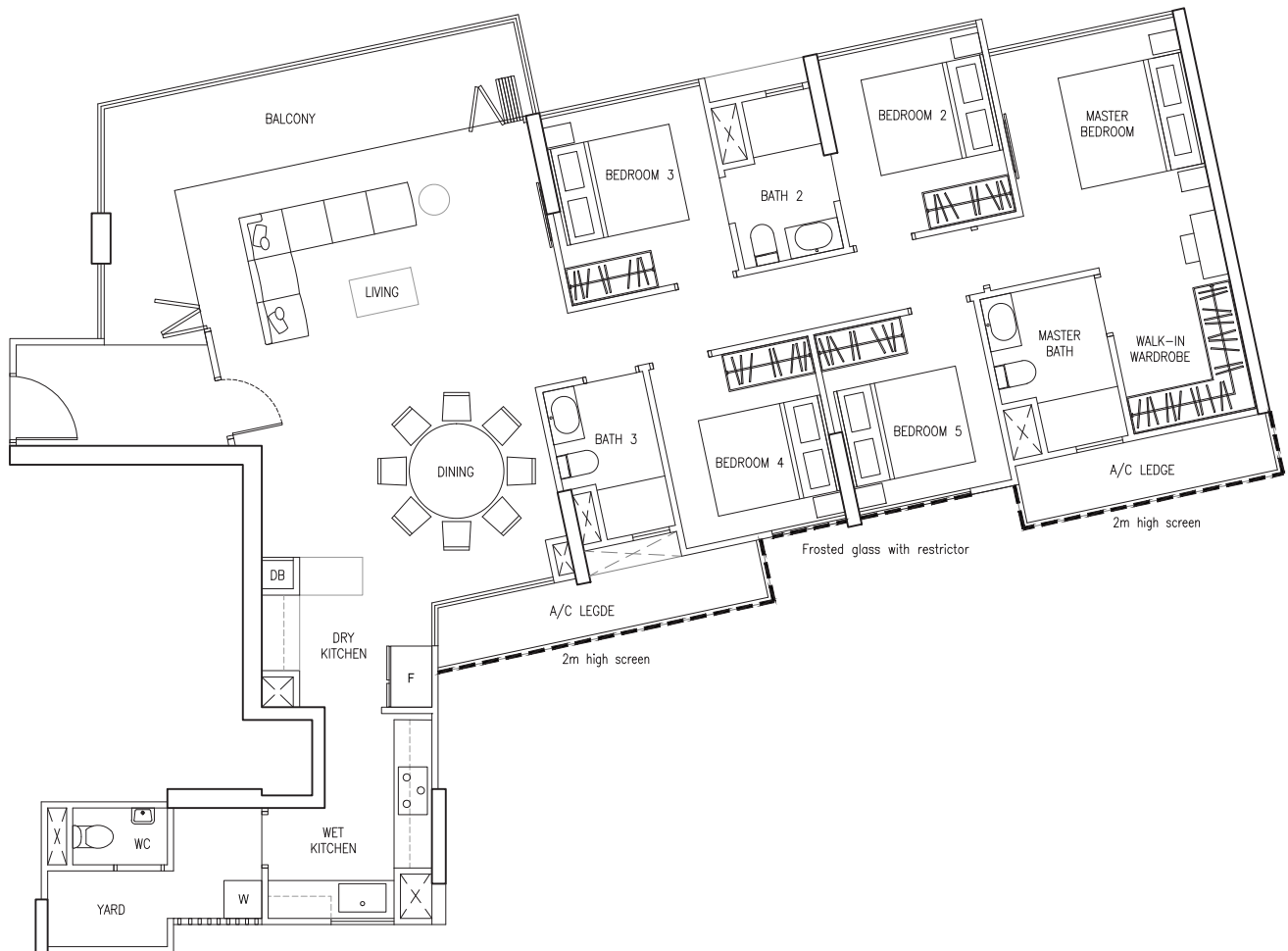
PENTHOUSE

5 BEDROOM

PATIO HOME

TYPE PH4

160 sq m/ 1722 sq ft
#16-16*



* DSTA screening / frosted glass may be provided for these units



Area includes A/C ledge, balcony and PES where applicable. Orientations and facings will differ depending on the unit you are purchasing. Please refer to the key plan. The plans are subjected to change as may be required or approved by relevant authorities. All areas are approximate and subject to final survey. The developer and its agents cannot be held liable for any inaccuracies.